

# FRIENDS OF MINERALOGY

## COLORADO CHAPTER



### April 2026 Newsletter!

## Field Trip Report:

### *White Raven Mine, Boulder County, Colorado*

This past weekend, sixteen members of the Friends of Mineralogy Colorado Chapter ventured underground at the White Raven Mine to explore the breccias of this past-producing Ag-Pb locality. The mine, located on private property, was generously opened to the group by owner Markus Raschke, who also provided a brief historical and geological background of the deposit.



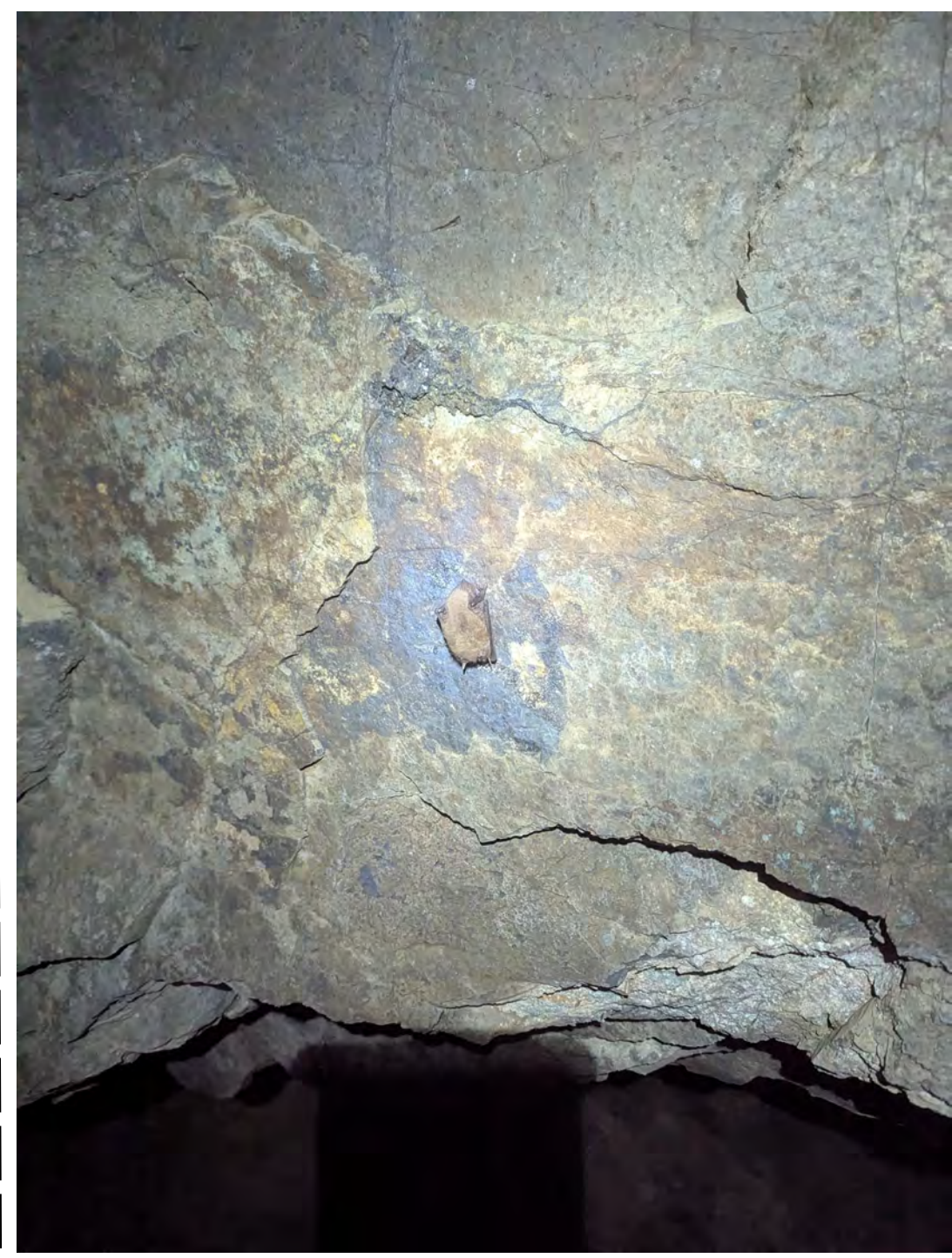
Markus points out where the railroad once traversed the opposite hillside.



While most of the wire silver and acanthite have long since been extracted—or now lie below the water table on deeper levels—abundant micro, and occasionally macro, siderite, barite, sphalerite, and, if you are lucky, galena can still be found in pockets accessible along the main stope. This stope is reached through a tunnel extending 380 feet into the mountain from California Gulch. The breccia follows the contact between a Laramide monzonite porphyry dike and Precambrian granite for hundreds of feet to the east and west while dipping steeply to the north. Although pockets are plentiful, the host rock does not make extraction easy.

Examining a bit of high-grade Ag ore at the tunnel entrance. Markus noted that, in the early days of mining, miners were literally raking silver wire and acanthite from pockets to ship to smelters. Wire silver has been known for centuries to grow from acanthite substrates; the implications for fake wires is clear, and there have been recent research efforts to fingerprint such fakes.



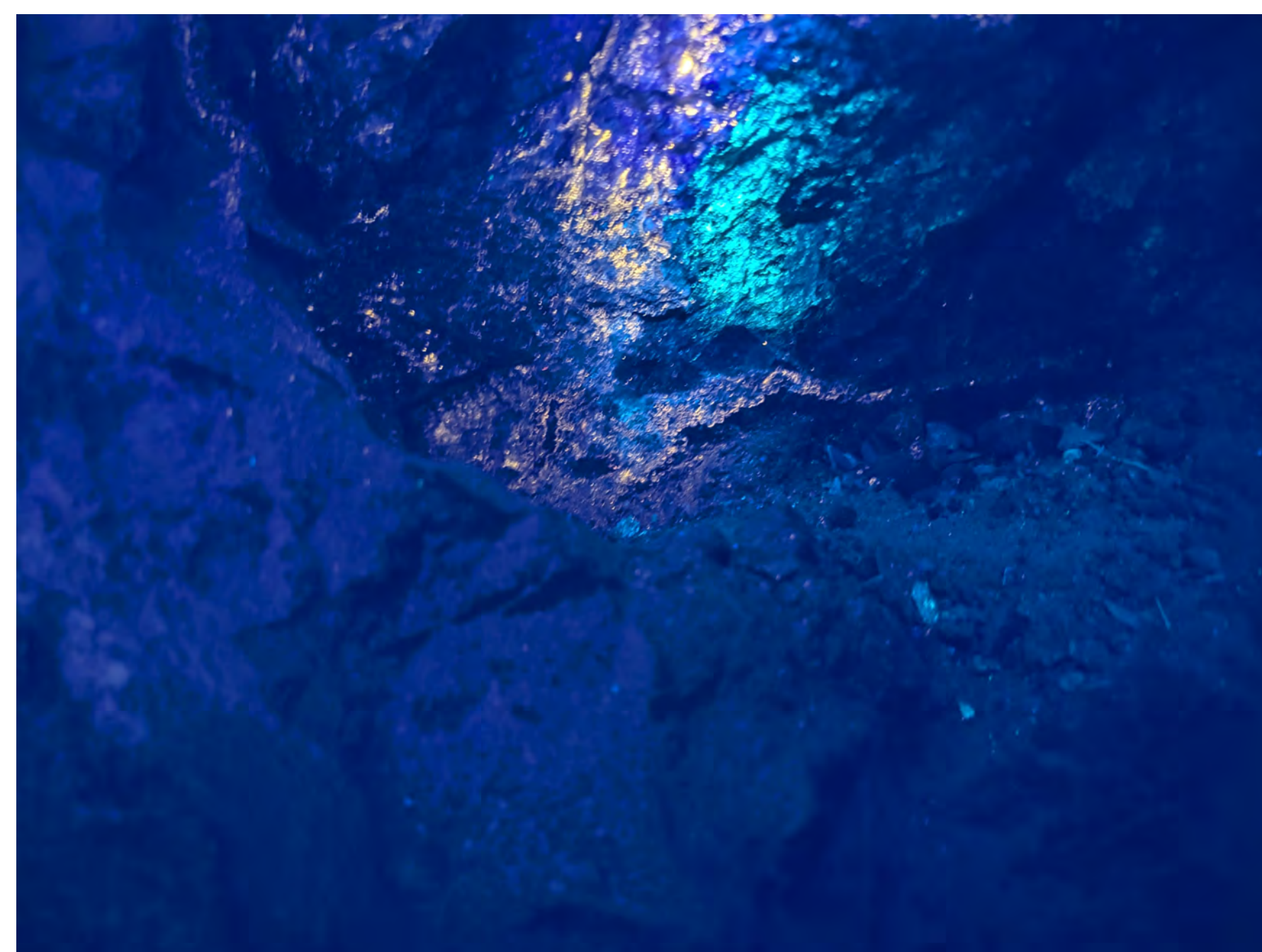


One of a handful of bats we encountered throughout the day—they did not seem to mind the ruckus!

Fortunately all participants were able to go home with rocks quite suitable to their liking after chiseling away at the unforgiving intrusive phases. And do not worry, there remains abundant pockets in the White Raven for future explorers to find!

Keep an eye out for a return trip to the White Raven later this year!

Fluorescent orange sphalerite with an unknown material displaying an electric blue-green fluorescence.



## Next Meeting

May 14th, 6:00 PM

Berthoud Hall

Room 108

Colorado School of  
Mines Campus

Fred Barnard,  
Consulting Geologist

We are delighted to have Fred come and share his experiences collecting some of the more unusual minerals from the Atacama Desert in Chile; formal title and abstract coming soon!



FRIENDS OF MINERALOGY COLORADO CHAPTER 2026 SYMPOSIUM:

# COLORADO 150

*Celebrating 150 Years of Colorado Statehood*

Featuring presentations on Colorado Mineralogy, field trips, workshops, mineral auctions, & more!



General Registration Now Open (Field Trips and Workshops will be announced in early 2026; register now for priority field trip and workshop sign up)

REGISTER HERE:



**June 11th - 15th, 2026**

at *Colorado School of Mines in Golden, CO*

[friendsofmineralogycolorado.org/symposium](https://friendsofmineralogycolorado.org/symposium)

**President: Benjamin Murphy**

**Vice President: Brian Kraft**

**Secretary: Jeff Kuhn**

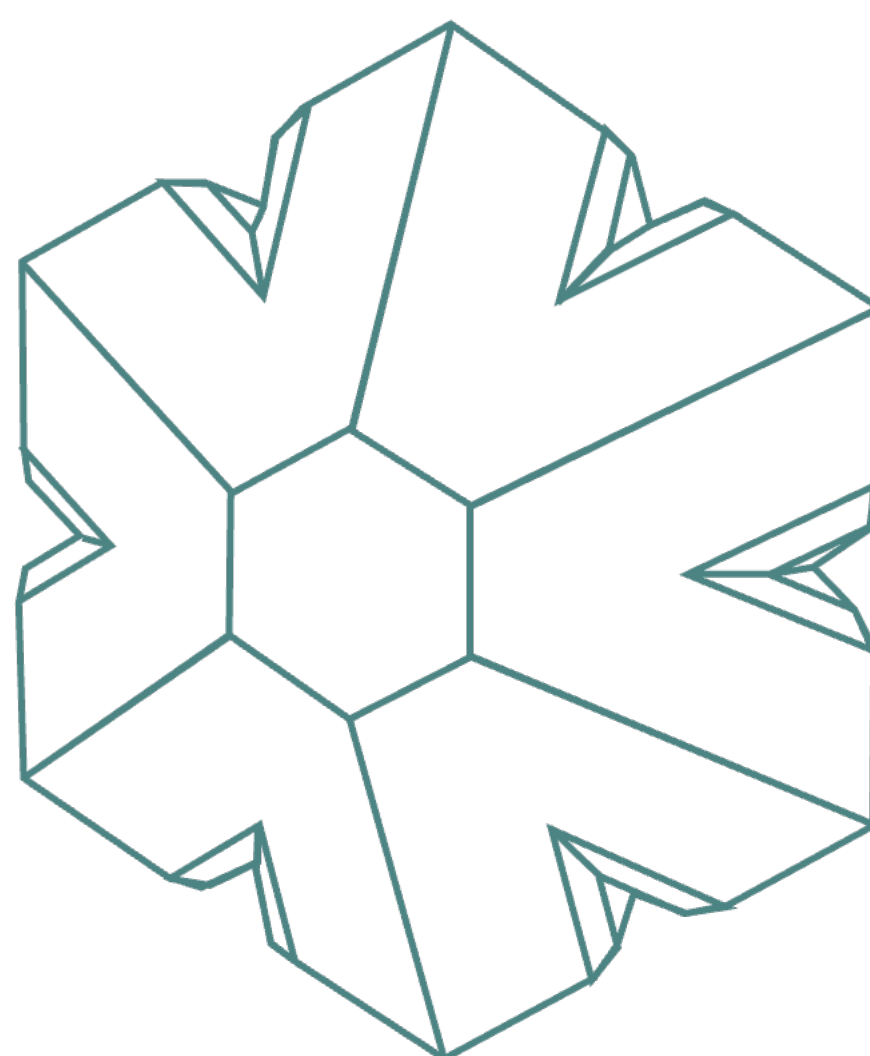
**Treasurer: Nate Wilke**

**Director-At-Large, Seat 1: Anne Fulton**

**Director-At-Large, Seat 2: Caleb Chappell**

**Director-At-Large, Seat 3: Bob Hembree**

**Director-At-Large, Seat 4, Markus Raschke**



[friendsofmineralogycolorado.org](https://friendsofmineralogycolorado.org)