

Friends of Mineralogy, Colorado Chapter Newsletter – August/September 2006

September Meeting – Thursday, September 21, 7:30 p.m.

(Board meeting 6:45-7:30)

Denver Museum of Nature and Science – V.I.P. Room. Enter through the single door Security/Staff entrance to the left of the main entrance. The V.I.P. room is to the left through the cafeteria area.

September Program:

**Terrance Yee of MicroSat Systems
will speak on**

“Geological Instrumentation for Space Research”

Mr. Yee is the Chief Engineer for the TacSat2 spacecraft and the manager of the Systems Engineering Group at MicroSat Systems. He was previously the President of Deep Space Enterprises, a systems engineering consulting company. Prior to this he led the development of CHIPSat as the Chief Engineer at SpaceDev. At AeroAstro, Mr. Yee was the Program Manager of the PA-X sounding rocket program and served as the Director of Business Development. In addition, he has a variety of experience ranging from low-thrust trajectory optimization to heat exchanger design for hypersonic aircraft and UV spectrometer payloads. Mr. Yee has a B.S. and M.S. of Aerospace Engineering.

* * * * *

Remember to mail your ballot for bylaws changes or come vote at our September 21 meeting.

* * * * *

FMCC dues for 2006 are \$13.00, which includes membership in national Friends of Mineralogy. Please send your dues payment to: FM-Colorado Chapter, P.O. Box 5276, Golden CO, 80401-5276.

FMCC 2006 Officers:

President, Richard Parsons, 303-838-8859

Vice-President, Jack Thompson, 719-636-2978

Treasurer, Jim Hurlbut, 303-757-0283

Secretary, Paul Kendall, 303-470-3261, and newsletter editor

Directors: Bill Chirnside (2005-06), 303-989-8748

Bruce Geller (2006-07), 303-237-2947

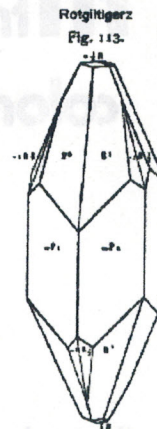
Pete Modreski (2006-07), 303-202-4766

Proposed FMCC Bylaws Changes and Ballot

All members should have received a mailing for proposed changes to FMCC's Bylaws and Articles of Incorporation a couple of weeks ago. The Board of Directors strongly recommends that you vote for these items in one of three ways: in person at our upcoming member meeting on September 21, or by the stamped, self-addressed postcard ballot included in that mailing, or by email to Paul Kendall by noon September 21 at bealsio@qwest.net.

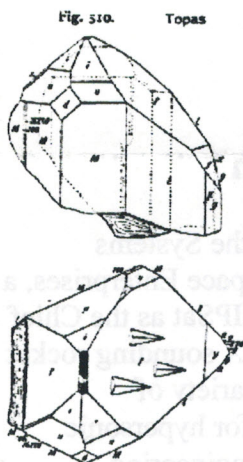
It is important that as many members as possible vote because current bylaws require a large percentage of members, or quorum, to approve bylaws changes. In recent meetings we have not had that large percentage of members attending. The proposed changes will allow a more reasonable percentage of members to approve bylaws changes.

Proustite,
Chañarcillo, Chile.
All crystal drawings
in this newsletter
issue, except the
FMCC logo mineral
drawing on page 1,
are from *Atlas der
Krystallformen* by
Victor Goldschmidt.



Call for Volunteers for FM Mineral ID Booth and Kids' Corner, Denver Gem and Mineral Show

We are in need of volunteers for (a) the FM Club and Mineral Identification Booth at the Denver Show, any days and times; and, (b) to help Pete Modreski at the "Kid's Corner" booth. The first requires modest knowledge of mineral identification (we always have additional "experts" floating around), and the second, just an interest in talking with kids about the rocks and minerals we'll have on "touch me" display there, and checking off the answers on the "Mineral Show Treasure Hunt" sheets they will be returning to the booth for a small gemstone prize. If you are willing to help with either, preferably for a 2-3 hour shift (which will entitle you to complimentary admission to the show), please contact Pete, at pmodreski@usgs.gov or 303-202-4766. Thank you! --Pete Modreski



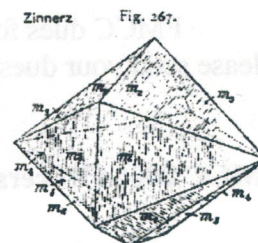
Topaz,
Minas Novas,
Minas Gerais,
Brazil

FM National Board Meeting at Denver Show

There will be a short (1 hour) FM Board of Directors meeting for Officers, Directors, and Chapter Presidents at the Denver Show. They are hoping to have enough voting directors present for a quorum. For voting directors and for all who are interested, please attend if you are at the show.

The meeting will be held on Friday, September 15 at 3:30 pm in room K 40-42 at the Merchandise Mart.

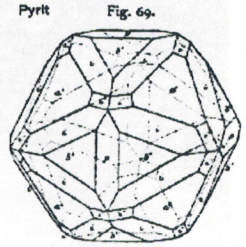
Cassiterite,
Huaina Potosi,
Bolivia



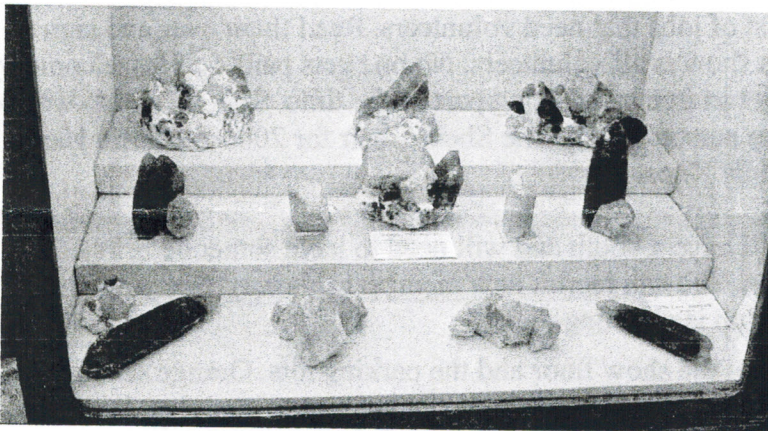
Reception and Open House, Geology Museum, Colorado School of Mines, Golden, CO

The annual Reception and Open House of the Geology Museum, Colorado School of Mines, will be held Wednesday, September 13, 2006, from 7 to 10 pm. Everyone in the mineral collecting community is invited. Featured this year will be the John Marshall Newry, Maine Tourmaline collection and the newly opened Ultraviolet Minerals Room in Blaster's Uranium Mine. As in years past, our host and museum curator Paul Bartos will have hors d'oeuvres, a cash bar, and a silent auction. Donations for the silent auction are welcomed. The address of the museum is 1310 Maple St., Golden. There will be abundant, free, on-site parking after 5 pm.

Pyrite,
Chivata,
Peru



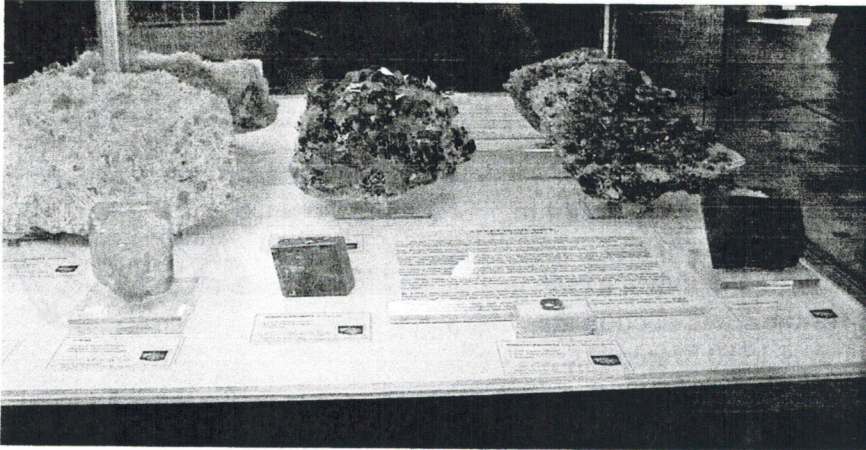
Mineral Specimens Recently Seen



Amazonite and Smoky Quartz,
Last Hurrah Pocket, Ray Berry's CSMS #1
claim, Park County, Colorado. Ray and
Eloise Berry specimens at the Pikes Peak
Gem and Mineral Show, Colorado Springs,
June 2006. Middle specimen is 6 inches
wide. Photo by Paul Kendall.

Calaverite and Fluorite, Amethyst,
yellow Fluorite, Calaverite, and
Turquoise (left to right), all from
Colorado. Bryan Lees specimens at the
Visitor Center, Garden of the Gods,
Colorado Springs. Calaverite is 4
inches wide. Photo by Paul Kendall.





Rhodochrosite on Quartz, Topaz, Rhodochrosite (polished), Rhodochrosite, Rhodochrosite gem, Fluorite, Rhodochrosite (left to right), all from Colorado. Bryan Lees specimens at the Visitor Center, Garden of the Gods, Colorado Springs. Single Rhodochrosite crystal at far right is 3 inches wide. Photo by Paul Kendall.

Denver Gem and Mineral Show Jobs

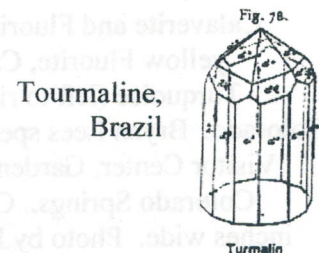
We need help!! The following is a list of jobs that need volunteers. Read them over and sign up for the job(s) that you would like to do. This show is all volunteers. No one gets paid, so please come by and join us. You can meet new people and get in free by working part of the time. Sign up sheets will be available at your club meetings or contact the person listed. The Show Chair for 2006 is Martin Hannu 303-429-2519 or icd55mph@qwest.net. --Judy Knoshaug

CLUB BOOTH: Your own club will have a booth and will need to have someone demonstrating or answering questions. You can recruit new members this way. See your club chairperson for details of what your club is planning.

SECURITY: The main job is to patrol the show floor and the parking lots. Orange security vests and walkie-talkies are provided. Security volunteers do not attempt to apprehend suspected shoplifters, but radio back to security head. Volunteers are asked for 4-hour shifts at a time. Other security at the show is contracted by the show committee with ARKO and the Adams County Sheriff's Office. Contact Sandra Leake 303-343-9764 or Ted Gildea 303-730-9332 or gildea@mindspring.net

CLERKS TO ASSIST JUDGING: Clerks are needed to assist with judging during the show. These individuals must be willing to work with a team of judges throughout Friday and must be able to neatly and accurately record judge's comments. This is a good place to learn first hand the rules and protocol of judging. Contact Jim Hurlbut 303-757-0283 or jfhu@earthlink.net or Larry Havens 303-757-6577 or lghavens@aol.com.

HOSPITALITY: Need volunteers every day. We serve coffee and tea, donuts and snacks to the volunteers and dealers. Contact Marsha or Glen Smith 303-693-0790 or smithgpml@comcast.net.

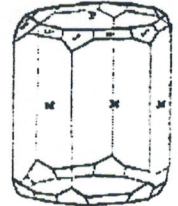


SALES AREA: (Grab bags, posters, pins, other items) This job is fun because you work mostly with a lot of kids. Contact Julie Schott 303-980-1401 or jhschott@cybox.com.

ADMISSIONS: Extra help is needed here as we have two entrances to cover- the mineral show and the fossil show. Helpers will be hand stampers, ticket takers and ticket sellers (need cash handling experience making change and working fast when the crowds hit). Contact Barb Melby 303-423-5876.

ADMISSIONS: Extra help is needed here as we have two entrances to cover- the mineral show and the fossil show. Helpers will be hand stampers, ticket takers and ticket sellers (need cash handling experience making change and working fast when the crowds hit). Contact Barb Melby 303-423-5876.

Beryl Fig. 5.



Beryl, Muzo,
Colombia

EXHIBITS ASSISTANTS: Volunteers are needed Thursday to assist the exhibitors as they register and set up their cases. Need help cleaning cases before and after each day for fingerprints etc. Contact Donna Hughston 303-989-8748 or dhughston@awwarf.com.

DEALER CHECK IN: Workers needed Thursday - Sunday. Minimal Typing. Contact Bob Loeffler 303-980-1174 or bobl@peaktopeak.com.

VOLUNTEER CHECK IN: Wednesday through Sunday. Keeping track of the volunteers and giving out badges. Contact Sharon Hannu 303-429-2519 or icd55mph@qwest.net.

SHOW SET UP: Volunteers are needed to set up Wednesday from Noon on. Skirting tables, assembling exhibit cases etc.

SHOW TAKE DOWN: Volunteers are needed Sunday after 5 PM. Strip tables, take down cases, etc.

SCHOOLS: Help guide school kids into the show. Friday AM only. Judy Knoshaug 303-423-2923 or jrknoshaug@comcast.net.

SPECIAL EXHIBITS: Help is needed on Thursday from 10 AM to 7 PM setting up and assisting with special exhibits. Contact Donna Hughston 303-989-8748 or dhughston@awwarf.com.

POSTER/GEMSTONE GIVEAWAY: Exchange coupons from ads in the newspaper for free posters or gemstones.

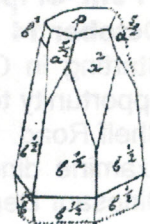
SCHOOLS: Help guide school kids into the show. Friday AM only. Judy Knoshaug 303-423-2923 or jrknoshaug@comcast.net.

SPECIAL EXHIBITS: Help is needed on Thursday from 10 AM to 7 PM setting up and assisting with special exhibits. Contact Donna Hughston 303-989-8748 or dhughston@awwarf.com.

POSTER/GEMSTONE GIVEAWAY: Exchange coupons from ads in the newspaper for free posters or gemstones.

Parisit

Fig. 13.



Parisite,
Muzo,
Colombia

Mineral Sale October 14, 15

MINERAL SALE

October 14, 15, 2006, Saturday & Sunday

10 AM - 4 PM At our NEW BARN

7513 Tudor Rd, CS. CO, EXIT 1-25 #149

Selected from our collection and Last Hurrah Pocket

Hundreds of crystals to choose - Most are \$1 to \$50

Ray & Eloise Berry 719 598-7877



Cripple Creek Parks and Recreation Center Fall Classes

Geoscience Adventure Classes Cripple Creek Parks and Recreation Department



The Fossil Record: An Introduction to Paleontology

October 7, 2006 8:30 am to 5:30 pm

This outdoor-based class offers an unmatched opportunity to understand the basics of paleontology and the fascinating world of fossils. The Florissant Fossil Beds National Monument will be the center of our studies. The course fee includes two field trips, admission to the national monument and a commercial collecting quarry. **Course fee: \$69.**



Field Studies in Paleontology: Exploring the Shelf Road From Cripple Creek to Garden Park, Colorado

October 14 8:30 am to 5:30 pm

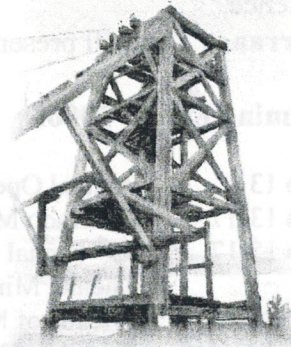
Starting in Cripple Creek, this field-oriented class offers an unsurpassed opportunity to explore the geological and paleontological wonders along the Shelf Road. The class will view the famous Garden Park dinosaur sites and examine dinosaur tracks. Transportation, course guide, admission to the Dinosaur Depot, and snacks are included. **Course fee: \$69.**



History and Geology of the Cripple Creek Mining District

October 21, 2006 8:30 am to 5:30 pm

The Cripple Creek Mining District is one of the most interesting geologic regions in the country. In this field-oriented program, you will learn about the local geology and tour current operations at the Cresson surface mine. Be prepared for lively discussions and lots of fun as you explore the mining operations that are currently underway and learn about the mining history of this area. Transportation, course guide, and snacks are included. **Course fee: \$69.**

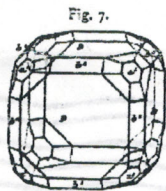


To register call Cripple Creek Parks and Recreation today
719-689-3514

Participants may earn 0.5 graduate-level semester credit from the **Colorado School of Mines** for an extra fee for each class. This credit is optional. The credit is applicable for teacher license renewal in the State of Colorado and is generally accepted elsewhere. The additional fee for graduate credit from the Colorado School of Mines is \$30.00. This fee must be paid by check, payable to the Colorado School of Mines and given to the instructor.



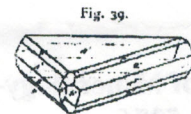
Chlorsilber



Chlorargyrite,
Veta Negra, Chile

Native Gold,
Matto Grosso,
Brazil

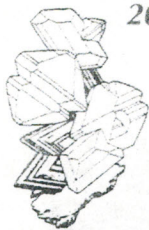
Gold



COLORADO MINERAL & FOSSIL SHOW

Holiday Inn - Denver Central • 4849 Bannock Street (where I-25 meets I-70)

SEPTEMBER 13 - 17, 2006



200 Top Quality Dealers from around the world on 3 floors of the hotel!!

Minerals • Fossils • Meteorites • Jewelry
Gems • Decorator Items • Open to the public
FREE Admission • Wholesale & Retail
FREE Shuttle Bus to the Merchandise Mart Shows

Show Hours: Wed. thru Sat. 10 - 6 & Sun. 10 - 5

And
Don't Miss the
**COLORADO
FOSSIL EXPO**

Martin Zinn Expositions, L.L.C. • P.O. Box 665 • Bernalillo, NM 87004 • Fax (505) 867-0073 • E-mail: mz0955@aol.com • www.mzexpos.com

FMCC September meeting is Thursday, September 21, 2006, 7:30 pm, Denver Museum of Nature and Science.

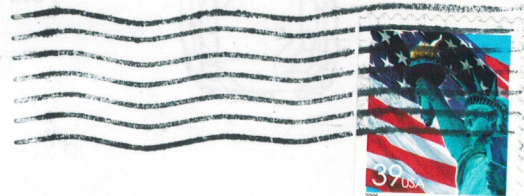
Terrance Yee will present "Geological Instrumentation for Space Research."

Coming Events 2006:

- Sep 13 Annual Open House, Geology Museum, Colorado School of Mines, 7 – 10 pm
- Sep 13-17 Colorado Mineral & Fossil Show, Holiday Inn Denver Central, 4849 Bannock St., Denver
- Sep 15-17 39th annual Denver Gem and Mineral Show, Denver Merchandise Mart, 58th Ave. and I-25, Theme: Minerals of South America
- Sep 21 Friends of Mineralogy meeting, DMNS. This is the 3rd Thursday in September.
- Nov 2 Friends of Mineralogy meeting, DMNS. This is the 1st Thursday in November.



Friends of Mineralogy—Colorado Chapter
P.O. Box 5276
Golden, CO 80401-5276



COLORADO MINERAL & FOSSIL SHOW

SEPTEMBER 13 - 17, 2006

