

## Friends of Mineralogy, Colorado Chapter Newsletter – February/March 2008

**March Meeting – Thursday, May 8, 7:30 pm**

*(Board meeting 6:45-7:30)*

### **May Program:**

#### **Minerals of Gold By Harry Covey**

Harry Covey was born in Salida, Colorado in 1932 into a Welch/German mining family. His father worked in the South London and London Butte mines at Alma from 1937 to 1939. His family moved to a ranch near Cripple Creek in 1939. Harry studied geology at the University of Colorado, and worked for thirty-one years with the Department of Commerce as Scientific and Industrial Photographer. He has given programs about minerals to the Colorado Mineral Society, the Flatirons Mineral Club, the Denver Mining Club, the New Mexico Mineral Symposium, and the Fort Collins Mineral Club; and he has displayed telluride minerals in Colorado Springs. In short, Harry has a devout interest in minerals and scientific investigation.

Harry is the owner of the *Phil Sheridan Lode*, which was discovered in 1872 and patented in 1874, and of the Washburn #1 & #2 lode claims, in Sunshine, Colorado. These claims produced various gold (and silver) telluride minerals in abundance, including altaite, calaverite, coloradoite, hessite, krennerite, nagyagite, petzite and sylvanite. Gold telluride minerals are still being recovered from the old tailings. Harry specializes in the tellurides of gold and silver and other minerals of the precious metals, and in microphotography of minerals.

\* \* \* \* \*

FMCC dues for 2008 are \$13.00, which includes membership in national Friends of Mineralogy. Please send your dues payment to: FM-Colorado Chapter, P.O. Box 5276, Golden CO, 80401-5276.

#### **2008 FMCC Board of Directors:**

President, Larry Havens, 303-757-6577  
Vice-President, Jim Hurlbut, 303-757-0283  
Treasurer, Richard Parsons, 303-838-8859  
Secretary, Len Keller, 303-394-0497  
Director, Bill Chirnside (2007-08), 303-989-8748  
Director, Bruce Geller (2008-09), 303-237-2947  
Director, Pete Modreski (2008), 303-202-4766

#### **2008 Chairpersons:**

Membership/Hospitality, Donna Chirnside,  
303-989-8748  
Preservation, Richard Parsons, 303-838-8859  
Program, Jerry Kiefer, 303-679-8049  
Editor, Bill Hutchinson, 303-452-9009

## Museum Notes

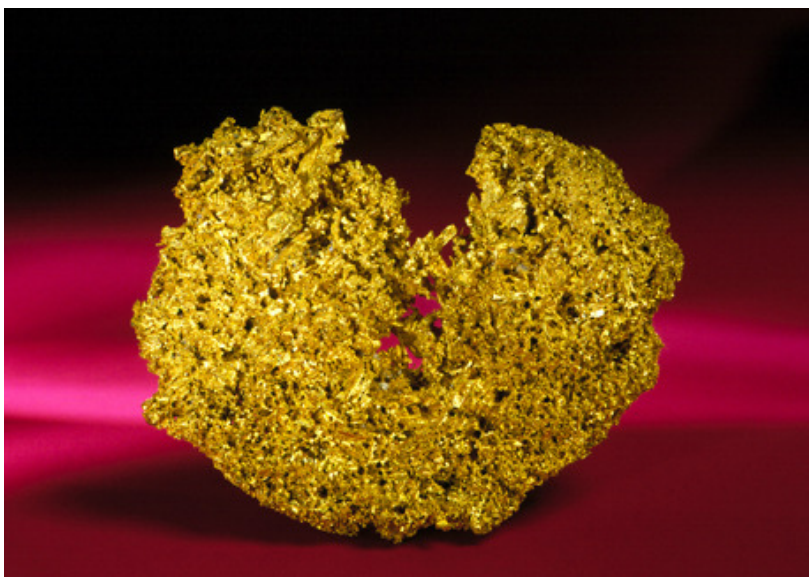
### Staff Changes at the Denver Museum of Nature and Science

Dr. Paul Morgan, formerly Chairman of the Earth Sciences Department and Curator of Geology, is no longer with the Museum. The Friends of Mineralogy, Colorado Chapter has greatly appreciated Paul's support of our organization and his generous outreach to the mineral community. We wish him well in his future endeavors!

Ian Miller is serving as Acting Curator of the mineral collection, and Tom Hughes serves as Collection Evaluator. Pending Paul's replacement, work continues on the process of evaluating the current collection and developing a draft acquisitions plan, with a focus on Colorado minerals.

### Traveling exhibit on Gold – Denver Museum of Nature and Science

A superb exhibit organized by the American Museum of Natural History (NYC) continues through June 8. This dazzling exhibition contains more than 2,000 pounds of the "shiny stuff." Admission will be \$15 for adults, \$11 for seniors, \$6 for juniors. General admission to the museum is included.



**Colorado gold specimen:** The exhibition includes this crystallized gold specimen, found at Leadville, Colorado. © Denis Finnin/AMNH

**The National Mining Hall of Fame and Museum in Leadville** has announced the appointment of Robert G. (Bob) Hartzell as Executive Director. Mr. Hartzell is a 38-year resident of Leadville. Hartzell served as a Professor of Business and Leadership at Colorado Mountain College in Leadville, retiring in 2004 as Campus Dean. Active in the local community, Hartzell has served as City Councilman and Mayor Pro Tem, and was a founding member of the Leadville Coalition, organized to promote community and economic development. Former Director Sam McGeorge is now employed by COMINCO, in Washington State.

In the Winter/Spring issue of *The High Grade*, the Museum's newsletter, it was announced that NASA has designated the Museum as the repository of a sample of moon rock. The specimen is to be presented by geologist/astronaut Jack Schmidt in the near future, and will be on permanent loan.

# PRESERVATION - WHAT'S UP?

## News from the FMCC Preservation Committee

The Preservation Committee presented a plan to the Board in March of this year, identifying several areas FMCC can address in the preservation arena. These include increasing awareness of preservation issues among FM members and the public at large, preserving important mineral localities, preserving access to collecting localities, preserving mineral specimens and preserving and disseminating information on the history, scientific, esthetic and educational value of minerals.

Some of these activities lend themselves to immediate action, while others will require extensive discussion, exploration and a long-term perspective. In some cases, competing interests such as balancing preservation against collecting access will have to be balanced.

### I. Awareness

We have begun placing a brief article in each newsletter – “**Preservation – What’s up**”, and a companion article, “**The Museum Corner**”, soliciting input from Colorado museums having collections related to minerals, mining and related history. In July FMCC will also conduct a survey of member interests and satisfaction, including issues relating to preservation.

### II. Preserving Access to mineral collecting localities

By November, the Preservation Committee plans to establish a collaborative Task Force on potential road closures affecting access to Colorado collecting localities, and to complete a preliminary assessment of the feasibility of negotiating access to privately held (or government-controlled) sites such as the Lone Tree peridot locality, including the possibility of creating a State “Peridot Park” at that locality.

### III. Preserving Important Localities

The preservation of important localities is a longer-term issue. FMCC needs to determine whether there are localities that, as an alternative to development, closure and reclamation or other actions permanently closing all access, should be preserved for educational, scientific or other special uses.

The committee is developing a panel presentation on alternatives to mine closures for presentation at the Denver Show, and assessing the status of proposed mine closures in Colorado that may affect collecting and/or scientific access to mines of mineralogical significance.

Preservation of scientific and historical records of mineralogically important localities is important. In instances where the site itself cannot be preserved FMCC will seek to collaborate with museums, educational institutions and historical societies to optimize preservation of and access to records.

In 2008, the Committee will begin exploring ways in which FMCC can encourage preservation of such records. The Committee will also explore with the State Historical Society the potential for gathering

audio/video-taped accounts from individuals having special knowledge of mining or collecting in Colorado.

## IV. Preserving Specimens for Public, Research and Educational Access

to encourage collection, curation and study of collections by amateur collectors, the Committee will develop a program on development and curation of a private collection, to be offered to gem and mineral clubs in the area. In presenting this information, the Committee believes that we should stress the responsibility of collectors to assure the future of specimens they collect.

Committee is deeply concerned about the loss of valuable specimens and important information about their provenance through careless dispersal of private collections by collectors or their estates. The committee seeks to preserve collections or surplus materials facing discard or neglect by such means as consulting to estates; supporting acquisition of specimens by Colorado museums; and assisting museums in disposition of de-accessioned materials.

In 2008, we will begin by beginning work on a resource directory for estates and for collectors wishing to dispose of their collections, and making known FMCC's willingness to assist museums with acquisition or disposal of specimens.

## V. Disseminating Information and Teaching Materials

There is a need and opportunity to increase awareness & understanding of the history, scientific, esthetic and educational value of minerals, and the history of mines and other mineral localities in Colorado.

This year, we plan to focus on supporting teachers of earth sciences in the K-12 schools. We plan to develop a brief directory of teaching resources to be distributed to teachers at the Denver Show and similar venues. This hand-out will include information about teaching materials available from the CSM Museum, USGS, the Ft. Collins Rockhounds and other organizations, and a directory of museums, mines and other resources offering educational tours and activities, including the student tours offered at the Denver Show.

The Committee will also explore the potential for FMCC collaboration with USGS and CSM teacher-support programs, and teacher-support activities of other clubs to maximize availability of labeled specimens and other teaching materials.

Any member interested in helping with any of these activities is encouraged to contact Committee Chair Richard Parsons at 303-838-8859 or [Richard.parsons@att.net](mailto:Richard.parsons@att.net).

### **Notable Quotes;**

#### **Churchill, Winston S.**

...man will occasionally stumble over the truth, but usually manages to pick himself up, walk over or around it, and carry on.

#### **Frisch, Max**

(1911-) b. Switzerland

Technology is the knack of so arranging the world that we do not experience it.

## **Mineral Sales**

Sat.-Sun., May 3-4, Mineral Sale at the home of Ray & Eloise Berry, Colorado Springs. "9 AM - 4 PM in our barn at 7513 Tudor Rd.; I-25 Exit 149, turn north past the hotels, then left on Tudor Rd. Selected from our collection and trade stock; hundreds of crystals to choose from - most are \$1 to \$50".

Ray & Eloise Berry, 719-598-7877, rayber@q.com

Thursday, May 8, bimonthly meeting of Colorado Chapter, Friends of Mineralogy; Minerals of Gold, by Harry Covey, owner of the Phil Sheridan Lode mine, at Sunshine, Boulder County. 7:30 p.m. in the V.I.P. Room, Denver Museum of Nature & Science.

## **FMCC Auction**

The Colorado Chapter of the Friends of Mineralogy will hold its annual silent auction of mineral hobby items on May 17th at the Clements Community Center located at 1580 Yarrow (near Colfax and Wadsworth) in Lakewood, Colorado, from 1:00 to 3:00 P.M. This auction features reasonably priced minerals, faceted stones, books, and mining paraphernalia to the general public. There will be a special verbal auction at 2:00 P.M. of museum quality specimens donated by special dealers.

As reminders: 1.Our bidding increment remains 25-cents, 2.We are always in need of extra help on auction day, particularly as cashiers/readers, 3.Please sign up on May 8th to bring finger foods, verbal auction donations, and to volunteer on the 17th.

A special invitation is extended to non-FM members to participate in this auction as buyers and/or sellers. All sellers are requested to pre-register by phoning Jim Hurlbut (303-757-0283). All interested sellers and buyers are invited to phone Bruce Geller at 303-237-2947 for further details.

The average sales price for the 240 items auctioned last year was \$9.32. Eighteen different sellers successfully sold items in the two-hour period. That means the materials selling from our tables can't be beat! There is virtually no limit on the amount of materials that any seller can set out at our auction. Set up time for dealers is roughly noon. Dealers, completely fill out your bid slips and try to make your opening bids reasonable, or you'll take home most of what you're trying to sell.

Bidding will start at 1:00 P.M. Tables will be closed randomly, beginning with two tables at 1:40 P.M.; then roughly two tables at a time every 10 minutes thereafter. Our small verbal auction of quality materials will commence at about 2:00 P.M. We hope this is our best auction ever and we can always use extra help!

# COLORADO MINERAL AND FOSSIL SHOW, SPRING 2008

## EDITOR'S NOTES:

The spring mineral show and sale had some interesting new finds exhibited. I especially liked the Spessartine garnets from Tanzania and the Creedite from Empire, Colorado. As usual I assisted with the set up and teardown of Self A Ware Minerals owned by FMCC members Jeff Self and Donna Ware. I wandered the halls looking at all that was for sale. A very good assortment of goods I must admit! Cut stones from D&J Rare Gems out of Salida, Mineral specimens from Dave Bunk, Joe Dorris along with many others. Tel was selling his wonderful Ethiopian opals and many dealers had rooms full of people. I am a garnet man myself and enjoyed lurking about the rooms looking for that elusive deal on any and all garnets. Some of course were much to rich for me but I did find a few nicely formed grossulars for a dollar each.



New find from 2007. The new spessartites from Loliondo, close to Serengeti National Park in Tanzania

I found an artist who along with her mineral sales, paints some quite unique artwork. The suggestion was made to her to mix ground minerals into the paint to keep in touch with the spirit of the show. Her paintings have a great deal of texture and depth.



Art by Anita Kuhn



Marty Zinn on right and crew



A new 2007 find of Creedite

On the last day a young gentleman walked into Self A Ware with a portable XRF detector, what a toy! We had him hit a few specimens to see what kind of reading he would get and were happy to see my chalcopryrite had over 500ppm Ag (silver) at the point of analysis. All in all a very enjoyable show.

**What potent blood hath modest May.**  
- Ralph W. Emerson

## May Birthstone: Emerald



### Meeting Dates for 2008

Dates for our 2008 meetings will be September 18, and November 13. The September meeting will be after the Denver Gem and Mineral Show.

**By the time one is eighty, it is said, there is no longer a tug of war in the garden with the May flowers hauling like mad against the claims of the other months. All is at last in balance and all is serene. The gardener is usually dead, of course.**

- Henry Mitchell, *The Essential Earthman*, 1981

### Check your membership! Have you paid your dues?

Membership in FMCC and National FM is still only \$13 in 2008. Payment by check can be sent to the address on page 1 or given to our Treasurer or any Board member.

### Newsletter

Your newsletter editor encourages all FMCC members to send your email address so that you will receive the newsletter electronically. The email version of the newsletter is in color; the paper version will have none. Please send your email address to editor Bill Hutchinson at [wmhutchi5@msn.com](mailto:wmhutchi5@msn.com). Also if you only want a paper newsletter but are presently receiving an email newsletter, let your editor know also.

FMCC May meeting is Thursday, May 8, 2008, 7:30 pm, at the Denver Museum of Nature and Science.

### Coming Events 2008:

- |           |   |
|-----------|---|
| Apr 25-27 | Colorado Mineral & Fossil Show (Spring), Denver, CO   |
| May 3     | CMS Auction   |
| May 8     | FMCC meeting, DMNS  |
| May 10-11 | Grand Junction Gem and Mineral Show, Two Rivers Convention Center, Grand Junction             |
| Sep 12-14 | Denver Gem and Mineral Show, Denver Merchandise Mart, theme "Minerals of Colorado"            |
| Sep 18    | FMCC meeting, DMNS  |
| Sep 25-28 | American Federation of Mineralogical Societies (AFMS) National Convention, Humble, TX         |
| Nov 7-9   | Rocky Mtn Federation of Mineralogical Societies (RMFMS) Convention, Tulsa, OK <i>Revised!</i> |
| Nov 13    | FMCC meeting, DMNS  |



**Friends of Mineralogy–Colorado Chapter**  
**P.O. Box 5276**  
**Golden, CO 80401-5276**