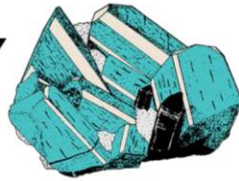


**FRIENDS OF MINERALOGY  
COLORADO CHAPTER**



**January 2019 Newsletter**  
**Meeting: Thurs., Jan. 10, 7:30 p.m.**  
**All are welcome!**  
**Lakeview Event Center**  
**7864 W. Jewell Ave. Lakewood CO**

***Chapter's meeting place: Lakeview Event Center, Lakewood CO***

At 7864 W. Jewell Ave.; on the south side of Jewell Ave., 1/5 mile west of Wadsworth, west of the King Soopers shopping plaza. Turn south across the street from Wendy's, into Lakewood Village Center; the front entrance of the building faces west.

## ***Exploring Mines and Mineral Collecting in the Magdalena Mining District of New Mexico in the 1970's***

*by Bob Hembree*



*Kelly Mine, 1916. USGS photograph*

The Magdalena Mining District is in Socorro County, New Mexico approximately 28 miles west of Socorro along US Highway 60. The district was discovered in 1866 and produced lead, silver, gold, copper, and zinc until 1979. The largest production was from 1881 through 1919. Most of the major mines are in the central part of the district near the ghost town of Kelly. The most famous of these mines is the Kelly Mine from which the robin's egg blue Smithsonite was produced. Other mines

include the Waldo-Graphic, Juanita, Germany, Tip-Top, Linchburg, and Nitt among others. Most of the production from the district came from replacement deposits located in the Kelly limestone which is of Mississippian age.

During the 1970s while I was attending the New Mexico Institute of Mining and Technology (NM Tech) in Socorro several friends and I spent most of our spare time exploring and mineral collecting in the mines of the Magdalena and other mining districts of central New Mexico.

This paper will present our experiences exploring and collecting minerals in the mines of the Magdalena district. While the district is best known for fine specimens of Smithsonite many other fine specimens of oxide and other minerals have been produced.



**Bob Hembree** is a retired mining engineer and geologist who lives in Bailey, Colorado. He graduated from New Mexico Institute of Mining & Technology in 1975. After graduation he spent his career working at various mining operations around the US and in Kazakhstan. He has worked at operations that produced gold, silver, copper, lead, zinc, vanadium, and uranium. One of his more interesting positions was as manager of technical services at the Nyrstar zinc mines in Tennessee which included the Elmwood mine. He currently spends his time mineral collecting, fishing, building a model railroad, and occasionally consulting. Bob is the current (2019) president of the Friends of Mineralogy, Colorado Chapter.

\* \* \* \* \*

### **New FMCC officers for 2019**

Results of the email-in and voice voting at the November 2018 FMCC meeting has elected new officers, effective January 1, 2019.

The officers will be:

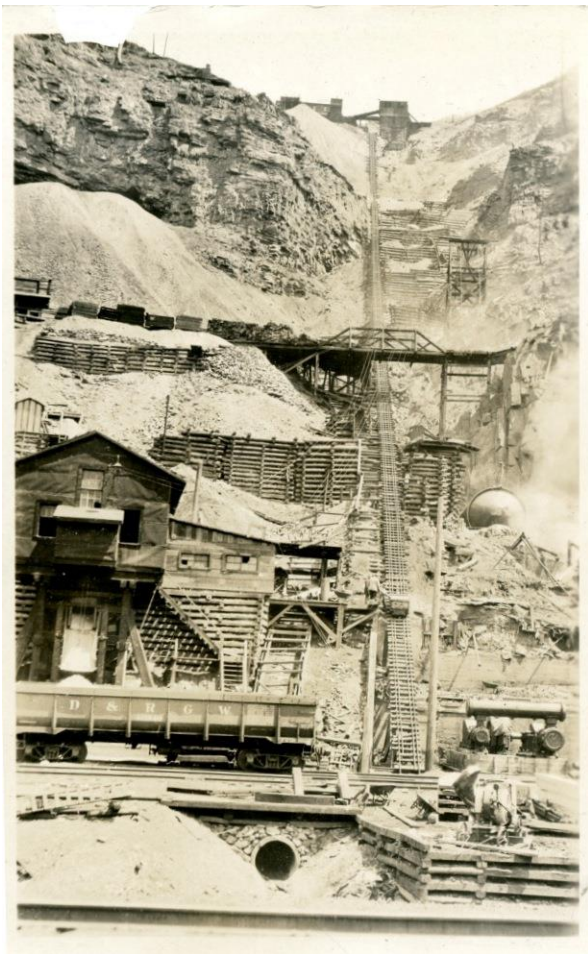
- Bob Hembree- President
- Gloria Staebler – Vice President
- Ed Pedersen – Secretary
- Mark Jacobson – Treasurer

Board members (5):

- Don Bray
- David Bunk
- Larry Havens
- Pete Modreski
- Jeff Self

\* \* \* \* \*

**12 January 2019, Second work session for indexing  
The New Jersey Zinc Company photographs of  
the Gilman mine, Eagle County, 1890-1950**



The planned **Second** FMCC work session to index and create a digital finding aid for the Gilman Mine photographs is planned for **Saturday, January 12, 2019 from 10 AM to 5 PM** at Mark Jacobson's home, 1714 S. Clarkson Street, Denver, Colorado. This house is located 1 mile west of the University of Denver, three blocks south of I-25. He can be reached at [markivanjacobson@gmail.com](mailto:markivanjacobson@gmail.com) or 337-255-0627. **Please contact him** to confirm you plan to attend and help.

The first work session completed indexing 80 photos and negatives. We still have about 400 pictures to index.

The project work will involve removing each photograph from the box, typing information about the photograph, any caption or source information associated with the picture, the picture dimensions and other metadata into a numbered digital word file, assigning a picture number and taking a snapshot of the picture via a digital camera, cell phone or a portable scanner. FMCC will be providing archival plastic folders for each picture. We will be providing to the Colorado School of Mines library the digital indexing description files and digital snapshot photos. The school will do the archival digital flatbed scanning as high resolution tiffs at 1200 dpi.

**Volunteers must** bring their **portable laptop computer** for creating a word file for the pictures they index, and a **digital camera, cell phone or portable scanner** for the documentation photo. FMM will be providing pizza lunch, drinks and the clear plastic archival folders. We will have portable flash drives to transfer all the digital data to one computer. We have more than 500 pictures and negatives so this work session is not expected to complete the project.

Background for this project work was published in the 2018 March FMCC newsletter. Our goal is to help preserve some photographic Colorado history and make it available to others. Colorado mining historians have a rare opportunity here. We received these pictures in September 2017, via the New Mexico Bureau of Geology & Mineral Resources from the Franklin Mineral Museum, Franklin, NJ. The box of pictures total some five hundred plus pictures and some picture full size contact negatives. These pictures, mostly in labeled photographic albums, are mostly of the Gilman mine, Eagle County, Colorado but with a handful of Leadville and Canon city pictures cover the mining activities of the New Jersey Zinc Company in Colorado. The pictures represent the years 1890 to 1950 and document the mining activities, the town of Gilman, workers by name and railroad activities. As a historic record this material is of exceedingly high value. These pictures were reputedly discovered recently in a storage attic in the former Sterling Hill mine, NJ.

FMCC received this gift with the obligation to insure its permanent public access and preservation. Most photographs of this nature, either end up lost and destroyed, in private hands where the material is never used except for viewing while drinking a glass of wine or beer, or in a permanent archive with restricted or no access such as a university, library or museum.

## **1885-1893: Exchanger's Monthly, Mineralogist Monthly and Goldthwaite's Minerals magazine:**

### **An opportunity to pre-order a set of reprinted mineral magazines covering 1885-1893**

Mark Jacobson

During the 1990s, Jay Lininger and Larry Conklin with the help of scanned originals loaned from Robert Hauck, republished a complete set of the historic *Mineral Collector* magazine. The *Mineral Collector* was published by Arthur Chamberlain, in New York City with help from Albert C. Bates from 1894 to 1909, in fifteen annual volumes. This magazine predated *Rocks & Minerals*, the *American Mineralogist* and the *Mineralogist* magazines, and functioned as the only USA nation-wide magazine dedicated to mineral collectors containing original articles and advertisements from the leading mineral dealers of those years.

Mineral magazines or magazines with numerous articles on minerals prior to the *Mineral Collector* magazine were extremely few (such as The Agassiz Association Journal or the American Magazine of Natural Science), not widely distributed, and most did not last more than a year or two with one exception – three magazines that were published or assisted by Arthur Chamberlain and Albert C. Bates. These magazines were the *Exchangers' Monthly* (1885-1890) as volumes 1 to 5, the *Mineralogists' Monthly* (1890-1893) as volumes 6-8, and William Goldthwaite's *Minerals* (1892-1893) as volumes 1 to 3.

A complete digital set of the *Exchangers' Monthly*, *Mineralogists' Monthly* and Goldthwaite's *Minerals* has been created from loaned copies in the *Mineralogical Record's* Library obtained from Wendell Wilson mixed with scanned, digitally cleaned as best as possible, and sometimes retyped pages obtained from several repositories across the United States. The three sets are not perfect – advertisements are missing from numerous issues of Goldthwaite's *Minerals* and the *Mineralogist's Monthly*. The scanning quality was not uniform so many pages are distorted with tilted text or stretched letters. Some title pages had to be recreated since no originals with covers have been located anywhere. Some advertisements that could not be digitally cleaned, are quite dark and messy but still readable. Even with all these caveats, this set of three magazines is unique since publicly available complete, partial sets or scattered issues in libraries (as shown by the worldcat index system) are quite few. Privately available copies are similarly rare and whenever a few issues are offered for sale, they are quickly sold.

I will be printing, under FMCC sponsorship, a fixed number of sets that will be available for purchase in advance of printing at cost plus shipping postage. The cost of an entire set, consisting of 11 volumes will be \$275 which includes shipping and packaging costs. Each yearly volume will be softcover, perfectly bound (glued binding) in black and white. Page size will be 8.5 x 11 inches whereas the originals were 7 x 10 inches; thus the inside binding margin will be ample, allowing for easier reading without significantly folding or straining the binding.

To reserve your set, you will need to provide a check in advance, prior to February 1, 2019, payable to Friends of Mineralogy – Colorado Chapter, to Mark Jacobson, 1714 S. Clarkson Street, Denver, CO 80210 with your shipping address, and contact information (email or/and phone). The printer will be shipping the volumes in one USPS priority mail box. This is an one-time printing. Some of the *Exchangers' Monthly* issues are available for free from Google books if use wish to review some of the contents. This offer is good till February 1, 2019, with printing to be done soon thereafter.

The details of each individual volume is shown below:

Exchangers Monthly Volume 1 (12 issues), 120 pages  
Exchangers Monthly Volume 2 (12 issues), 144 pages  
Exchangers Monthly Volume 3 (12 issues), 172 pages  
Exchangers Monthly Volume 4 (12 issues), 306 pages  
Exchangers Monthly Volume 5 (12 issues), 220 pages

Mineralogists Monthly Volume 6 (12 issues), 252 pages  
Mineralogists Monthly Volume 7 (12 issues), 244 pages  
Mineralogists Monthly Volume 8 (5 issues), 100 pages

Goldthwaite's Minerals Volume 1 (1892, six issues- January to June), 214 pages  
Goldthwaite's Minerals Volume 2 (1892, six issues- July -December), 162 pages  
Goldthwaite's Minerals Volume 3 (1893, eight separate issues covering January to December), 250 pages

\* \* \* \* \*

**Dues for 2019:** Now is the time to pay dues for the coming year. A membership form is attached as the last page of this newsletter, or, see our website, <https://friendsofmineralogycolorado.org/> . Dues are \$15 for individual, \$25 for a family. Dues automatically include membership in the National organization, Friends of Mineralogy, Inc. Send payment to FMCC, P.O. Box 234, Arvada CO 80001-0234.

\* \* \* \* \*

**FM Colorado Chapter meetings:**

Meetings are normally held at 7:30 p.m. on the 2<sup>nd</sup> Thursday of alternate (odd-numbered) months. Our meeting place for 2019 will be the Lakeview Event Center, 7864 W. Jewell Ave., Lakewood CO. Meeting dates may be shifted in September and November so as not to conflict with the Denver Gem & Mineral Show or the New Mexico Mineral Symposium. Visitors are *always* welcome at our meetings!

Planned meeting dates for 2019 will be:

- Thursday, Jan. 10, FM meeting**
- Thursday, Mar. 14 FM meeting**
- Thursday, May 9, FM meeting**
- Sunday, May 19, FM Silent Auction**, Clements Community Center, Lakewood
- Sept. 13-15, Denver Gem and Mineral Show; 2019 show theme, "Minerals of Canada" (52<sup>nd</sup> annual show)**
- Thursday, Sept. 19, FM meeting** (date adjusted to not conflict with Denver Gem and Mineral Show)
- Thursday, Nov. 14, FM meeting**

\* \* \* \* \*

**Friends of Mineralogy, Colorado Chapter, 2019 officers:**

- President:** Bob Hembree, rhembree@comcast.net
- Vice President:** Gloria Staebler, gastaebler@aol.com, 303-495-5521
- Treasurer:** Mark Jacobson, markivanjacobson@gmail.com, 1-337-255-0627
- Secretary:** Ed Pederson, mineraljeep@aol.com
- Denver Museum N&S Liaison:** Alan Keimig, alan.keimig@gmail.com, 303-755-9604
- DG&MS Council Trustee:** David Bunk, dave@davebunkminerals.com;  
Alternate, Mark Jacobson
- Newsletter editor:** Peter Modreski, pmodreski@aol.com, 720-205-2553
- Field trip planner** (not field trip leader): unfilled
- FMCC Website:** unfilled
- Postings for the FM national facebook page:** unfilled
- At-large Directors:**
  - Don Bray, don\_bray@copper.net , 303-681-3646
  - David Bunk, dave@davebunkminerals.com
  - Larry Havens, lwrnchavens@comcast.net, 303-757-6577
  - Peter Modreski, pmodreski@aol.com, 720-205-2553
  - Jeff Self, selfawareminerals@gmail.com, 303-898-7539

## Calendar of Coming Events, 2019

**Mon, Jan. 7, 7:00 p.m.**, DREGS (Denver Region Exploration Geologists' Society) monthly meeting, "**Vanadium**" (mining, mineralogy, & technology), by Dr. Matt Rhoads, exploration geologist. Berthoud Hall Room 241, CSM campus; all are welcome to attend. Social time & refreshments 6:00 p.m., program at 7:00. See <http://www.dregs.org/>.

**Thurs., Jan. 10, 7:30 p.m.**, Friends of Mineralogy, Colorado Chapter, bimonthly meeting, **Exploring Mines and Mineral Collecting in the Magdalena Mining District of New Mexico in the 1970's**, by Bob Hembree. At the Lakeview Event Center, 7864 W. Jewell Ave. Lakewood CO. All are welcome! See <https://friendsofmineralogycolorado.org/>.

**Thurs., Jan. 17, 7:00 p.m.**, Colorado Scientific Society monthly meeting, two presentations on **Kilauea's 2018 eruption - new methods and perspectives for monitoring volcanic eruptions**. Don Becker, USGS, is a videographer who was sent to Kilauea to film and document the 2018 eruption and earthquakes; and Jeff Sloan works in the USGS UAS (Unmanned Aircraft Systems; i.e., "drones") program and will show how they were used at Kilauea. We may expect to see a lot of great video "footage" of the eruption. Shepherd of the Hills Church, 11500 W. 20th Ave., Lakewood; social time with refreshments begins at 6:30 p.m. Anyone is welcome to attend. See <http://coloscisoc.org/>.

**Sun., Jan. 20, 12 noon**, monthly meeting of the Florissant Scientific Society, "**Still Crazy (About Franklin) After All These Years**", by C.R. (Bob) Carnein. All are welcome to attend; shared potluck lunch (optional) at noon, program begins at 1 p.m. At UCCS (University of Colorado at Colorado Springs) campus; contact Beth Simmons, [cloverknoll@comcast.net](mailto:cloverknoll@comcast.net), for exact room & building location & directions. This will be a version of the same program that Bob presented at our Friends of Mineralogy meeting in November.

**Feb. 14-17, Tucson Gem and Mineral Show**. These are the dates of the Tucson Gem and Mineral Show in the Tucson Convention Center; other shows in town, indoor and in outdoor booths, take place then and earlier at locations at multiple locations.

**Fri.-Sat.-Sun., Feb. 22-24, Denver Gem & Mineral Guild Jewelry, Gem, and Mineral Show**, Jefferson County Fair Grounds, 15200 W. 6<sup>th</sup> Ave., Golden, CO. Free parking & free admission; hours 10-6 Fri. & Sat., 10-5 Sun.

**Thurs., Feb. 21, 7:00 p.m.**, Ken Balleweg (Consulting Geologist), "**The Beulah marble: Ornamental stones of Colorado**", and Don McGurk (Rocky Mountain Map Society), "**Geographies Unrealized, The Story of Four Cartographic Myths of North America.**" Monthly meeting of the Colorado Scientific Society, Shepherd of the Hills Church, 11500 W. 20th Ave., Lakewood; all are welcome.

**Thurs., Mar. 14, 7:30 p.m.**, Friends of Mineralogy, Colorado Chapter, bimonthly meeting; topic TBA.

**Thurs., Mar. 21, "A Cook's Tour of Colorado's Glacial Landscape"** by Dr. Vince Matthews. Monthly meeting of the Colorado Scientific Society, Shepherd of the Hills Church, 11500 W. 20th Ave., Lakewood; all are welcome.

**Fri.-Sat.-Sun., Mar. 22-24, Fort Collins Gem & Mineral Show**; at Thomas M. McKee Building, at The Ranch/Larimer County Fairgrounds, 5280 Arena Circle, Loveland, CO (I-25 exit 259); hours 4-8 Fri., 9-6 Sat., 10-5 Sun. Sponsored by the Fort Collins Rockhounds Club.

**Fri.-Sat.-Sun., Apr. 12-14, Colorado Mineral and Fossil Spring Show**, Crown Plaza Hotel /Convention Center, 15500 E 40th Ave., Denver, Colorado, 10-6 Fri. & Sat., 10-5 Sun., free parking & admission.

**Thurs., May 9, 7:30 p.m.**, Friends of Mineralogy, Colorado Chapter, bimonthly meeting; topic TBA.

**Sun., May 19, Friends of Mineralogy, Colorado Chapter, Silent (+Vocal) Auction**. Noon to 4 p.m., Clements Community Center, 1580 Yarrow St., Lakewood CO. All are welcome to attend.

**Fri.-Sat.-Sun., May 31-June 2, Pikes Peak Gem & Mineral Show**, Norris-Penrose Event Center, 1045 Lower Gold Camp Road, Colorado Springs, CO 80905. Sponsored by the Colorado Springs Mineralogical Society.

*For more lecture series during the year see:*

**Colorado Beer Talks** (2<sup>nd</sup> Tuesday, 6-8 p.m.), Windy Saddle Café, 1110 Washington Avenue, Golden, “Golden’s grassroots version of TED talks, Expand your mind with a beer in your hand”, <http://goldenbeertalks.org/>

**Colorado Café Scientifique in Denver**, monthly lectures on science topics held either at Blake Street Station or Brooklyn’s, Denver; open to the public, no charge other than refreshments you may choose to purchase; see <http://cafescolorado.org/> .

**Colorado Scientific Society** (3<sup>rd</sup> Thursday, 7 p.m.), see <http://coloscisoc.org/> . Meets at Shepherd of the Hills Church, 11500 W. 20th Ave., Lakewood CO, except when noted.

**CU Geological Science Colloquium** (Wednesdays, 4 p.m.) see <http://www.colorado.edu/geologicalsciences/colloquium>

**CSU Dept. of Geoscience Seminars** (Fridays, 4 p.m.), see <https://warnercnr.colostate.edu/geosciences/geosciences-seminar-series/>

**Van Tuyl Lecture Series, Colorado School of Mines**, (Thursdays, 4 p.m.): <https://geology.mines.edu/events-calendar/lectures/>

**Denver Mining Club** (Mondays, 11:30), see <http://www.denverminingclub.org/> .

**Denver Museum of Nature and Science, Earth Science Colloquium series**, 3:00-4:00 p.m., VIP Room unless noted, day of the week varies. Museum admission is not required; see <http://www.dmns.org/science/research/earth-sciences/>

**Denver Region Exploration Geologists Society** (DREGS; 1<sup>st</sup> Monday, 7 p.m.), <http://www.dregs.org/index.html>

**Florissant Scientific Society** (FSS); meets monthly in various Front Range locations for a lecture or field trip; meeting locations vary, normally on Sundays at noon; all interested persons are welcome to attend the meetings and trips; see <http://www.fss-co.org/> for details and schedules.

**Nerd Night Denver** is a theater-style evening featuring usually 3 short (20-minute) TED-style talks on science or related topics; held more-or-less monthly at the Oriental Theater, 4335 W. 44<sup>th</sup> Ave., Denver; drinks are available; for ages 18+. Admission is \$6 online in advance, \$10 at the door. See <https://www.nerdnitedenver.com/> .

**Rocky Mountain Map Society** (RMMS; Denver Public Library, Gates Room, 3<sup>rd</sup> Tuesday, 5:30 p.m.), <http://rmmaps.org/>

**Western Interior Paleontological Society** (WIPS); beginning January 2019, WIPS will meet on the 1<sup>st</sup> Monday of the month, 7 p.m., at Lowry Conference Center, 1061 Akron Way, Denver. See <http://westernpaleo.org/> .

\* \* \* \* \*



*Ed Pederson and Don Bray, examining specimens at the FMCC Mineral Identification Booth at the 2019 Denver Gem & Mineral Show*



Prospective members for the Colorado Chapter, please send this form with your check to the address below. This form may also be used to renew your membership. Membership in the local chapter includes membership in the National Society. A local chapter member does not need to live within the area. Membership lists are not shared outside of the organization. Membership in the local chapter provides membership in the Rocky Mountain Federal of Mineralogical Societies (RMFMS) with its associated group 3<sup>rd</sup> party liability insurance for field trips.

**Please mail annual dues of \$15 for an individual, or \$25 for a family made out to Friends of mineralogy, Colorado Chapter to:**

Ms. Gloria Staebler

Friends of Mineralogy - Colorado Chapter  
P.O. Box 234  
Arvada, CO 80001-0234

Please complete the following for new members.

Last Name: \_\_\_\_\_ First name: \_\_\_\_\_

Middle name (optional): \_\_\_\_\_

Street Address (used for mail): \_\_\_\_\_

City: \_\_\_\_\_ State or Province: \_\_\_\_\_

County: \_\_\_\_\_ Zip or Postal Code: \_\_\_\_\_

Telephone (land line): \_\_\_\_\_ Telephone (Cell phone): \_\_\_\_\_

Email address: \_\_\_\_\_

Signature: \_\_\_\_\_ Date: \_\_\_\_\_

My primary area of interest is: \_\_\_\_\_

Chapter and National newsletters will be sent to you by email unless you request a paper copy to be mailed. \_\_\_\_\_ Please note that mail newsletter as sent as a black and white paper copy.

Friends of Mineralogy Colorado Chapter is affiliated with the Mineralogical Record Magazine, The Mineralogical Society of America (MSA), the American Geological Institute (AGI), Rock and Minerals magazine, the American Federation of Mineralogical Societies and the Rocky Mountain Federation of Mineralogical Societies.

Friends of mineralogy, INC. is composed of member of local chapters, of which in 2014, seven chapters existed. Members may affiliate with any chapter or none. Local chapters issue newsletters as does the national organization.